

New for 2006-07...

- Student Guide and Application
- Form G—Scholarship Assessment Form
- UCEP Deadline
- Basic Grant Increases
- Contact Information

NWT Student Financial Assistance Program



Inside this issue:

<i>Contact Information</i>	2
<i>Student Enrollment Forms</i>	2
<i>Loan Repayment/Remission</i>	2
<i>Release of Information</i>	3
<i>SFA On-Line Services</i>	3
<i>Postsecondary Student Bursary—French</i>	3
<i>Millennium Scholarships</i>	3
<i>Advice and Opportunities</i>	4

2006-07 Student Guide and Application

With the end of the school year fast approaching, it's time to start thinking about financial assistance for the upcoming academic year. NWT SFA is pleased to announce the early arrival of the 2006-07 Student Guide and Application. They are now available in our office, on our website, as well as the ECE office in your NWT community.

Submit your application for the upcoming academic year anytime before your deadline. It is not necessary to have your transcript and/or acceptance letter from your institution in order to apply for SFA. Your application will be evaluated based on the information you provide and should you have any changes, your information can be updated later.

Application Deadlines

If your academic year starts	Your deadline is
January 1 - 31	November 15th
May 1 - 31	March 15th
August 16 - September 30 & Canada Millennium Bursary	July 15th
All other months	One calendar month prior

You may now apply for the University/College Entrance Preparation Program (UCEP) by any of the above deadlines. As there is limited funding for this program, it is recommended to apply early.



NWT Student Financial Assistance
Department of Education, Culture and Employment
Income Security Division
P.O. Box 1320
Yellowknife, NT X1A 2L9

Telephone:
1-800-661-0793
867-873-7190
Fax:
1-800-661-0893
867-873-0336

E-mail: nwtsfa@gov.nt.ca
Website: www.nwtsfa.gov.nt.ca

Basic Grant Increases for 2006-07

	Current Funding	2006-07 Funding
Maximum tuition	\$1,750.00 per semester	\$1,925.00 per semester
Maximum book allowance	\$ 300.00 per semester	\$ 400.00 per semester

NWTSFA Scholarships

All students applying for the NWTSFA Scholarship must submit an official copy of their transcript, along with the NEW Form G - Scholarship Assessment Form. Form G is available in the 2006-07 Student Guide or can be downloaded from our website.

Looking for Advice??

- NWT SFA offers information on student financial assistance
- Your local ECE office offers academic and career counseling
- Your post secondary institution may offer academic and career counseling services.
- Ms. Nona German, Northern Student Services Advisor, provides free services for all NWT SFA students who attend educational institutions and training programs in the Edmonton area. The assistance and support a student receives is on an individual basis. Nona uses the resources available on the campus and in the community to assist student's with, for example, obtaining housing, orientation to city living, and personal and financial counseling. Nona can be reached at (780)491-1363 or via email at nona.german@ualberta.ca

Please remember it can take up to 10 business days to process your payment after all required documentation has been received.

Contact Information

Your Student Case Officer or Loans Officer is determined by your surname. Please note your particular Officer and contact information from this list.

SFA Supervisor

Nicole Beauchamp 867-920-6236 nicole_beauchamp@gov.nt.ca

Student Case Officers

A - C Mike Soloy 867-920-6217 mike_soloy@gov.nt.ca

D - K Vanessa Gagnon 867-920-3360 vanessa_gagnon@gov.nt.ca

L - P Tara Trobak 867-873-7441 tara_trobak@gov.nt.ca

Q - Z Dan Round 867-873-7195 daniel_round@gov.nt.ca

Loans Officers

A - L Joyce Pittman 867-873-7102 joyce_pittman@gov.nt.ca

M - Z Lorraine Fillion 867-920-6224 lorraine_fillion@gov.nt.ca

Student Enrollment Forms

NWT SFA requires 10 business days to process Student Enrollment Forms (SEF) and unfortunately, there is no way to speed up this process. Always have alternate financial arrangements until SFA processes your SEF and/or other required documentation for funding.

Many students do not realize a SEF is to be submitted each and every semester and no sooner than one calendar month prior to the start of the semester.

The SEF is required to confirm your registration for the upcoming semester. It also provides other pertinent infor-

mation such as course load information.

Please ensure your SEF is complete prior to having it submitted to our office. You may also want to confirm with SFA that the form has been received.



It is your responsibility to contact our office to arrange a loan repayment or remission before the six-month interest-free period has ended.

Loan Repayment / Remission

If you are not planning to return to full-time studies for any period of six months or longer, you will need to contact your Loans Officer to discuss your repayment and / or remission obligations (refer to the contact list above).

It is important that you keep

track of the money you borrow as you are obligated to repay a student loan just as you would a loan from the bank. If you are unable to meet your payment obligations you must contact your Loans Officer immediately to avoid having your credit rating jeopardized.

If you are planning to return to full-time studies without NWT SFA and wish to suspend your loan payments, you must submit a confirmation of full-time status. You can do this by submitting a Student Enrollment Form.

Release of Information

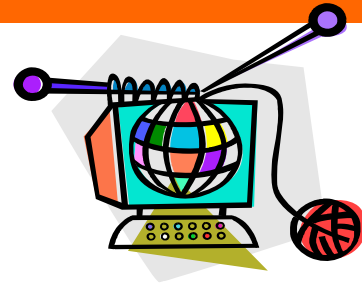
The NWT Access to Information and Protection of Privacy Act protects all information that you supply to NWT SFA. What this means is that any of the information we have collected in your file cannot be made available to anyone other than you. All requests for such information from a third party will be denied.

How do I provide access to a friend, family member, or anyone else?

If you want someone to have access to your NWT SFA file, please submit a Form B - Consent for the Release of Information to our department. This form can be found in the Student Guide or online at www.nwtsfa.gov.nt.ca.

SFA On-Line Services

The NWT SFA Program has many on-line resources available at www.nwtsfa.gov.nt.ca. Students may also apply for assistance on-line.



Dropping a Course??

Dropping below full-time student status may lead to a suspension from SFA. Always remember to contact your Student Case Officer if you are thinking about changing your course load.

Postsecondary Student Bursary - French

The Department of Education, Culture and Employment administers a French Bursary on behalf of the Government of Canada's Department of Canadian Heritage.

The Bursary is \$1000 per semester, up to a maximum of \$2000 per academic year. To be eligible you must:

- be a resident of the NWT for a minimum of 2 years;
- be enrolled full time at a University or Postsecondary College;
- pass at least 4 courses with a minimum of 3 in French;
- take a full course load for the term (minimum of 4 courses);
- submit a copy of the official transcript(s) as proof of successful completion of the courses according to the above criteria; and
- submit an application for each term by deadline below.

Applications are made to the Coordinator – French Programs with the Department of Education, Culture and Employment.

The deadline application for the fall term is August 1, 2006, for winter term is December 1, 2006 and for the spring/summer term is April 1, 2007. After those dates, all requests will be refused. If sent by mail, the postmark will be proof of mailing date. The bursary is payable upon completion of a semester and submission of an official transcript from the postsecondary institution. The amount received is also contingent on the number of approved applications.

For more information contact the Coordinator – French Programs of the Department of Education, Culture and Employment at 1-867-920-8992

Millennium Scholarships



Les bourses du millénaire

NWT SFA administers the Canadian Millennium Scholarship Foundation's (CMSF) Bursary program. Approximately 125 awards of \$3,000 each are available to eligible NWT students each year. Eligibility is based on financial need, determined by the income and expense section of the SFA application.

To qualify student's must meet the following requirements:

- apply by July 15 for the current academic year;
- be eligible as a NWT SFA full-time student;
- meet all CMSF criteria;
- enrolled at an eligible postsecondary institution in Canada;
- have not applied to another province or territory;
- provide an official transcript (s) indicating you have previously successfully completed the required percentage of a 100% full course load; and
- submit all required eligibility documents (transcript, SEF for the fall semester) by October 1, 2006 and a second SEF for the winter semester on or before February 1, 2007.



CIRCUMPOLAR YOUNG LEADERS PROGRAM

Are you a young Canadian from the North under the age of 30?

This program provides Northern youth with training and work experience at leading organizations in Arctic countries. As a circumpolar intern, you will have the opportunity to:

- live and work in another Arctic country;
- build on your current college or university education through applied research and communications on Arctic issues;
- contribute to the work of the Arctic Council;
- gain leadership skills;
- develop valuable relationships with other young Northern Canadians;
- grow personally and professionally; and
- help to build a sustainable development.

Please email intern-info@iisd.ca or refer to www.iisd.org for more information.



FEDERAL STUDENT WORK EXPERIENCE PROGRAM

The FSWEPP is the primary vehicle through which federal departments and agencies recruit for some students. To be eligible, you must be studying in Canada, or be a Canadian student studying abroad, and satisfy the following criteria;

- be a full-time secondary or post-secondary Student in an accredited institution
- be currently recognized as having full-time student status in the academic institution in which you are presently enrolled
- be returning to full-time studies for your next academic term
- be at least the minimum age to work in the province or territory where the job exists

Visit the Public Service Commission of Canada's website at www.jobs-emplois.gc.ca

EARTH TECH.

Building talent to lead.

Today's Earth Tech is a leader in the engineering, construction, facilities, infrastructure and environmental marketplace. Through our strategic growth, we have steadily expanded our technical capabilities, geographic presence and client base. With more than \$1.5 billion in revenues, our reach has become global and our engineering services comprehensive in water management, environmental management and remediation, solid waste, facilities design and construction, technology and transportation. Earth Tech is poised for continued domestic and international growth, and remains committed to client partnership, community participation and employee development everywhere we do business.

We are currently looking for the following professional:

Civil Engineering Technologist – Yellowknife

With knowledge of AutoCAD design and drafting, and experience in Total Station Surveying and construction inspections, you will assist with municipal projects throughout the North.

For more information on Earth Tech and this opportunity, or to apply online, please visit careers at www.earthtech.com

Alternately, contact our Yellowknife office at (867) 873-6316

Earth Tech is an equal opportunity employer.



A BETTER TOMORROW made possible

A tyco International Ltd Company



... is an **Electronic Labour Exchange**

Search for available job openings in the Northwest Territories, apply for jobs online, and store multiple resumes and cover letters.

Other employment opportunities are available on the following web-sites:

<http://www.gov.nt.ca>

<http://www.jobbank.gc.ca>

<http://www.jobs.gc.ca>

<http://www.monster.ca>

<http://www.nnsi.com>

<http://www.workopolis.com>

GNWT - SUMMER STUDENT EMPLOYMENT PROGRAM

Summer work opportunities are available to northern students to help them gain valuable work experience and enhance employment prospects upon completion of their studies. Northern students should submit a resume to Corporate Human Resources as soon as possible to maximize their opportunities for summer employment. Student resumes are provided to all GNWT departments, boards and agencies who wish to hire a summer student. For more information or to submit a resume, e-mail us at chrs@gov.nt.ca or call (867) 920-6218. Resumes can also be faxed to (867) 873-0235.

Helpful tips for students when applying for a government job

- Ensure your resume clearly states that you are a student enrolled in a postsecondary institution
- Identify your eligibility in order to receive priority consideration under the Affirmative Action Policy
- If you have taken a break from school and are planning on returning to studies in the fall, please attach a letter of acceptance from our educational institution to your resume
- Make sure your resume is clear, concise, and up-to date