

# Rumour Has It...

## NWT Student Financial Assistance

Spring 2007 Edition

### Student Handbook, Applications & Forms

NWT Student Financial Assistance is presently creating a “new” Student Handbook that will be used for multiple years. The new Handbook is expected to be available for distribution in early May.

The Applications and Forms will now be separate from the Handbook to allow for updates, if required.

Applications for funding for the upcoming 2007-08 academic year can be completed on last year’s application form. All forms are available in our office,

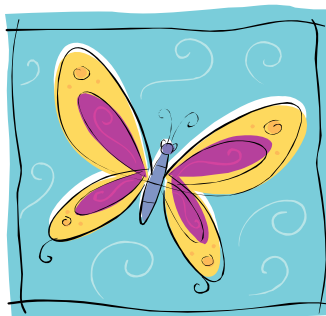
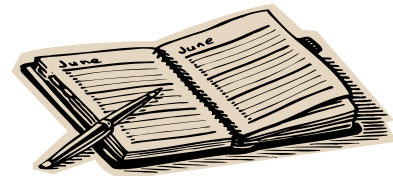
on our website, as well as the ECE office in your NWT community.

Feel free to submit your application for the upcoming academic year anytime before your deadline. It is not necessary to provide your transcript and/or acceptance letter from your institution before applying for SFA.

Your application will be evaluated based on the information you provide and should you have any changes, your information can be updated later.

#### Application Deadlines

If your academic year starts	Your deadline is
January 1 - 31	November 15th
August 16 - September 30 & Canada Millennium Bursary Awards	July 15th
All other months	One calendar month prior



### NWTSFA Scholarships

All students applying for the NWTSFA Scholarship must submit an official copy of their transcript, along with **Form C—Scholarship Assessment Form** (please

*note the name of this form has been changed*). **Form C** is available in our office, on our website, as well as the ECE office in your NWT community.

#### Inside this issue:

Release of Information	2
Child Care User Subsidy	2
Student Enrollment Forms	3
Loan Repayment/Remission	3
Millennium Scholarships	3
Employment Opportunities	4
Contact Information	5

#### New for 2007-08...

- Multi-Year Student Handbook replaces the annual Student Guide
- Forms and Applications
- Child Care User Subsidy for Northern Students
- Student Loan Repayment staff are now available at lunch hours every Tuesday and Thursday

### Looking for Advice?

- NWT SFA offers information on student financial assistance
- Your local ECE office offers academic and career counseling
- Your post secondary institution may offer academic and career counseling services.
- Ms. Nona German, Northern Student Services Advisor, provides free services for all NWT SFA students who attend educational institutions and training programs in the Edmonton area. The assistance and support a student receives is on an individual basis. Nona uses the resources available on the campus and in the community to assist student's with, for example, obtaining housing, orientation to city living, and personal and financial counseling. Nona can be reached at (780) 491-1363 or via email at [nonag@nait.ca](mailto:nonag@nait.ca)

## Release of Information

The NWT Access to Information and Protection of Privacy Act protects all information that you supply to NWT SFA. What this means is that any of the information we have collected in your file cannot be made available to anyone other than you. All requests for such information from a third party will be denied.

### How do I provide access to a friend, family member, or anyone else?

If you want someone to have access to your NWT SFA file, please submit a **Form B - Consent for the Release of Information** to our department. This form can be found in our office, on our website, as well as the ECE office in your NWT community.



## Child Care User Subsidy

As a student, you may also be eligible for a Child Care User Subsidy from the NWT to assist with the cost of child care. For more information, contact your local Career Centre or Canada/NWT Service Centre.

If you are outside the NWT, contact the Student Services office at your institution.



Free tax return completions for all postsecondary students in Canada offered by The Canadian Federation of Students and UFile.ca. As a student, you can sign on, complete your taxes and e-file it directly online at <http://ufile.ca/hom/cfs.asp>

## Student Enrollment Forms

SFA requires 10 business days to process a **Form D—Student Enrollment Form**. Always have alternate financial arrangements until SFA processes your **Form D** and/or other required documentation for funding.

Many students do not realize a **Form D** is to be submitted each and every semester and no sooner than one calendar month prior to the start of the semester.

The **Form D** is required to confirm your registration for the upcoming semester. It also provides other pertinent information, such as course load information.

Please ensure your **Form D** is complete prior to having it submitted to our office. You may also want to confirm with SFA that the form has been received.



*It is your responsibility to contact our office to arrange for loan repayment or remission before the six-month interest-free period has ended.*

## Loan Repayment / Remission

If you have previously received a student loan from the GNWT and are not planning to return to full-time studies for six months or longer, you will need to contact your Loans Officer to discuss your repayment and / or remission obligations (refer to the contact information on page 5).

It is important that you keep track of the money you borrow as you are obligated to repay a student loan just as you would a loan from the bank. If you are unable to meet your payment obligations you must contact your Loans Officer immediately to avoid having your credit

rating jeopardized.

If you are planning to return to full-time studies without NWT SFA and wish to suspend your loan payments, you must submit a confirmation of full-time status. You can do this by submitting a **Form D—Student Enrollment Form**.

### Millennium Scholarships



### Les bourses du millénaire

NWTSFA administers the Canadian Millennium Scholarship Foundation's (CMSF) Bursary program. Approximately 125 awards of \$3,000 each are available to eligible NWT students each year. Eligibility is based on financial need, determined by the income and expense section of the SFA application.

To qualify students must meet the following requirements:

- apply by July 15 for the current academic year
- be eligible as a NWTSFA full-time student
- meet all CMSF criteria
- enrolled at an eligible postsecondary institution in Canada
- have not applied to another province or territory
- provide an official transcript (s) indicating you have previously successfully completed the required percentage of a 100% full course load *and*
- submit all required eligibility documents (transcript, **Form D** for the fall semester) by October 1, 2007 and a second **Form D** for the winter semester on or before February 1, 2008



### GNWT - SUMMER STUDENT EMPLOYMENT PROGRAM

Summer work opportunities are available to northern students to help them gain valuable work experience and enhance employment prospects upon completion of their studies. Northern students should submit a resume to Corporate Human Resources (CHR) as soon as possible to maximize their opportunities for summer employment. Student resumes are provided to all GNWT departments, boards and agencies who wish to hire a summer student. For more information or to submit a resume, e-mail CHR at [chrs@gov.nt.ca](mailto:chrs@gov.nt.ca) or call (867) 920-6218. Resumes can also be faxed to (867) 873-0235.

#### Helpful tips for students when applying for a government job

- Ensure your resume clearly states that you are a student enrolled in a postsecondary institution
- Identify your eligibility in order to receive priority consideration under the Affirmative Action Policy
- If you have taken a break from school and are planning on returning to studies in the fall, please attach a letter of acceptance from our educational institution to your resume
- Make sure your resume is clear, concise, and up-to date

### FEDERAL STUDENT WORK EXPERIENCE PROGRAM

The FSWEP is the primary vehicle through which federal departments and agencies recruit for some students. To be eligible, you must be studying in Canada, or be a Canadian student studying abroad, and satisfy the following criteria:

- be a full-time secondary or post-secondary student in an accredited institution
- be currently recognized as having full-time student status in the academic institution in which you are presently enrolled
- be returning to full-time studies for your next academic term
- be at least the minimum age to work in the province or territory where the job exists

Visit the Public Service Commission of Canada's website at [www.jobs-emplois.gc.ca](http://www.jobs-emplois.gc.ca)



Other employment opportunities are available on the following websites:

<http://www.gov.nt.ca>

<http://www.jobbank.gc.ca>

<http://www.jobs.gc.ca>

<http://www.monster.ca>

<http://www.nnsl.com>

<http://www.workopolis.com>



... is an **Electronic Labour Exchange**

Search for available job openings in the Northwest Territories, apply for jobs online, and store multiple resumes and cover letters.

**SFA On-Line Services**

The NWT SFA Program has many on-line resources available at [www.nwtsfa.gov.nt.ca](http://www.nwtsfa.gov.nt.ca). Students may also apply for assistance on-line.



Congratulations to the 2006 winners of the Ministerial Postsecondary Awards of Excellence.

This year's recipients were

Lisa Radicchi from Yellowknife for academics, Holly Darkes from Fort Smith for the arts, and Chris Stipdonk from Fort Simpson for athletics.

**CONGRATULATIONS AGAIN!!!**

**CONTACT US!!!**

NWT Student Financial Assistance  
 Department of Education, Culture and Employment  
 Income Security Division  
 P.O. Box 1320  
 Yellowknife, NT X1A 2L9

Telephone:

1-800-661-0793

867-873-7190

Fax:

1-800-661-0893

867-873-0336

E-mail: [nwtsfa@gov.nt.ca](mailto:nwtsfa@gov.nt.ca)

Website: [www.nwtsfa.gov.nt.ca](http://www.nwtsfa.gov.nt.ca)



**Phone Numbers and E-mail**

Your Student Case Officer or Loans Officer is determined by your surname. Please note your particular Officer and contact information from this list.

SFA Supervisor

Nicole Beauchamp 867-920-6236 [nicole\\_beauchamp@gov.nt.ca](mailto:nicole_beauchamp@gov.nt.ca)

Student Case Officers

A - C	Kathy Monkman	867-920-6987	<a href="mailto:kathy_monkman@gov.nt.ca">kathy_monkman@gov.nt.ca</a>
D - K	Jolene Russell	867-873-7195	<a href="mailto:jolene_russell@gov.nt.ca">jolene_russell@gov.nt.ca</a>
L - P	Mike Soloy	867-920-6217	<a href="mailto:mike_soloy@gov.nt.ca">mike_soloy@gov.nt.ca</a>
Q - Z	Jeanette Goldney	867-920-6973	<a href="mailto:jeanette_goldney@gov.nt.ca">jeanette_goldney@gov.nt.ca</a>

Loans Officers

A - L	Joyce Pittman	867-873-7102	<a href="mailto:joyce_pittman@gov.nt.ca">joyce_pittman@gov.nt.ca</a>
M - Z	Lorraine Fillion	867-920-6224	<a href="mailto:lorraine_fillion@gov.nt.ca">lorraine_fillion@gov.nt.ca</a>